

# ACCESS GUIDE SUGAR

Visual Art Exhibition by Bianka Kennedy

PRAXIS ARTSPACE  
68-72 Gibson Street  
Bowden, 5007

(08) 7231 1974

[www.praxisartspace.com/sugar/](http://www.praxisartspace.com/sugar/)

OPEN WEDNESDAY-SATURDAY  
11AM – 4PM

# ABOUT THE EXHIBITION

*Welcome to SUGAR, I hope you find information below that may contribute to a pleasant attendance. I welcome feedback on these resources. - Bianka Kennedy, Artist*

Sugar? Sweet! But what do sugars in our body look like? Take a walk through an engaging exhibition of new works by visual artist and theatre designer Bianka Kennedy. Inspired by the research of scientist, Dr. Matthew Briggs, Bianka's sculptures have been created through exploration of complex sugars in the body. A family and access encouraged event.

*SUGAR* is an exhibition of sculptures located at praxis ARTSPACE, an independently run gallery and artist studio located in Bowden, just outside of the Adelaide CBD. It is a single story building with accessible toilet facilities. If you have any queries on the facilities please contact the gallery on 08 7231 1974 or email [admin@praxisartspace.com.au](mailto:admin@praxisartspace.com.au)

This exhibition will include "Access Sessions" which have been curated outside of Gallery Open Hours to welcome visitors who would like or need the sensory provisions provided in the various sessions. See full list below. To book a place in one of these sessions please email at [admin@praxisartspace.com.au](mailto:admin@praxisartspace.com.au)

## ACCESS SESSIONS

**SATURDAY 27th February 10-11am**

Low Sensory Gallery Experience

**SATURDAY 6th March, 10-11am**

Auslan interpretation and Visual description and tactile tour (and artist and scientist tour)

\*If you would like to make an appointment for a private viewing outside of either of these sessions or usual gallery hours, please contact the above email address.

# GETTING TO THE GALLERY

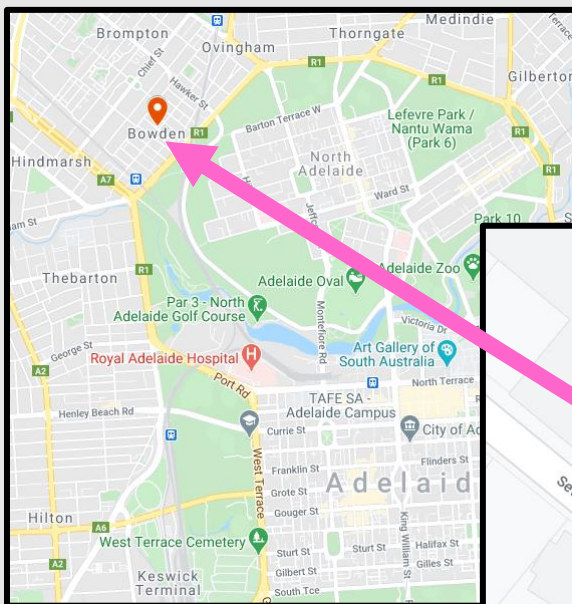
**By car:** street parking is available in non-zoned and time limited zones, please take note and observe signs. Wheelchair users are welcome to park in the small park on site, corner of Gibson Street and Seventh Street, however it is not guaranteed to be available. Please contact the gallery to discuss your needs.

**By bicycle or motorbike:** the small onsite parking area would be suitable for bikes however it is not an allocated bike park. Dedicated bicycle racks can be found at Plant4.

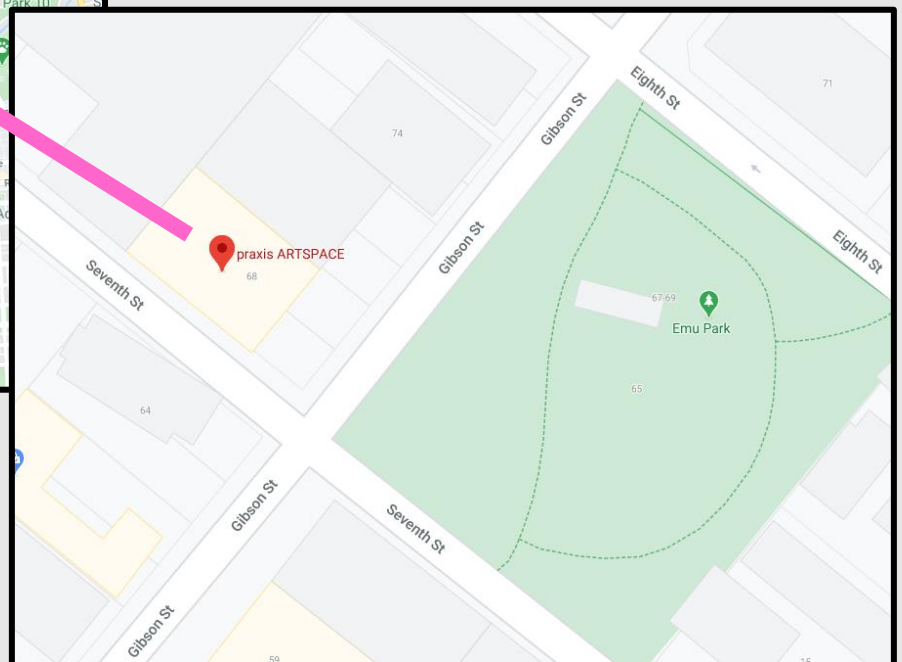
**By train:** Use the Gibson, Bowden stop and walk North East 450m along Gibson Street

**By tram:** Use the Adelaide Entertainment Centre stop and walk North East 600m along Gibson Terrace Street

**By bus:** Use the Hawker Street South side stop and walk 400m, starting South then West along Gibson Street



Praxis Artspace  
68-72 Gibson Street  
Bowden, 5007

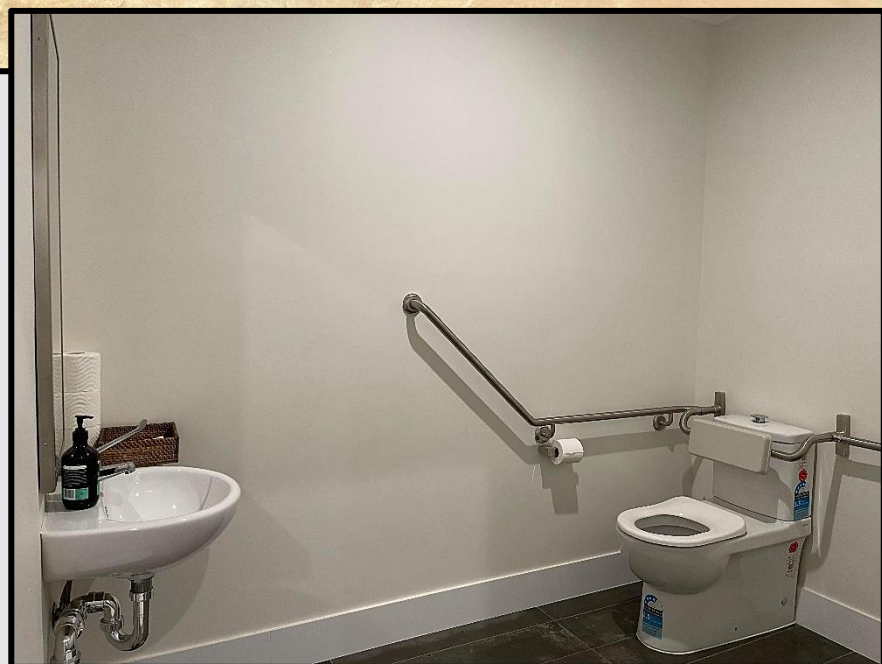
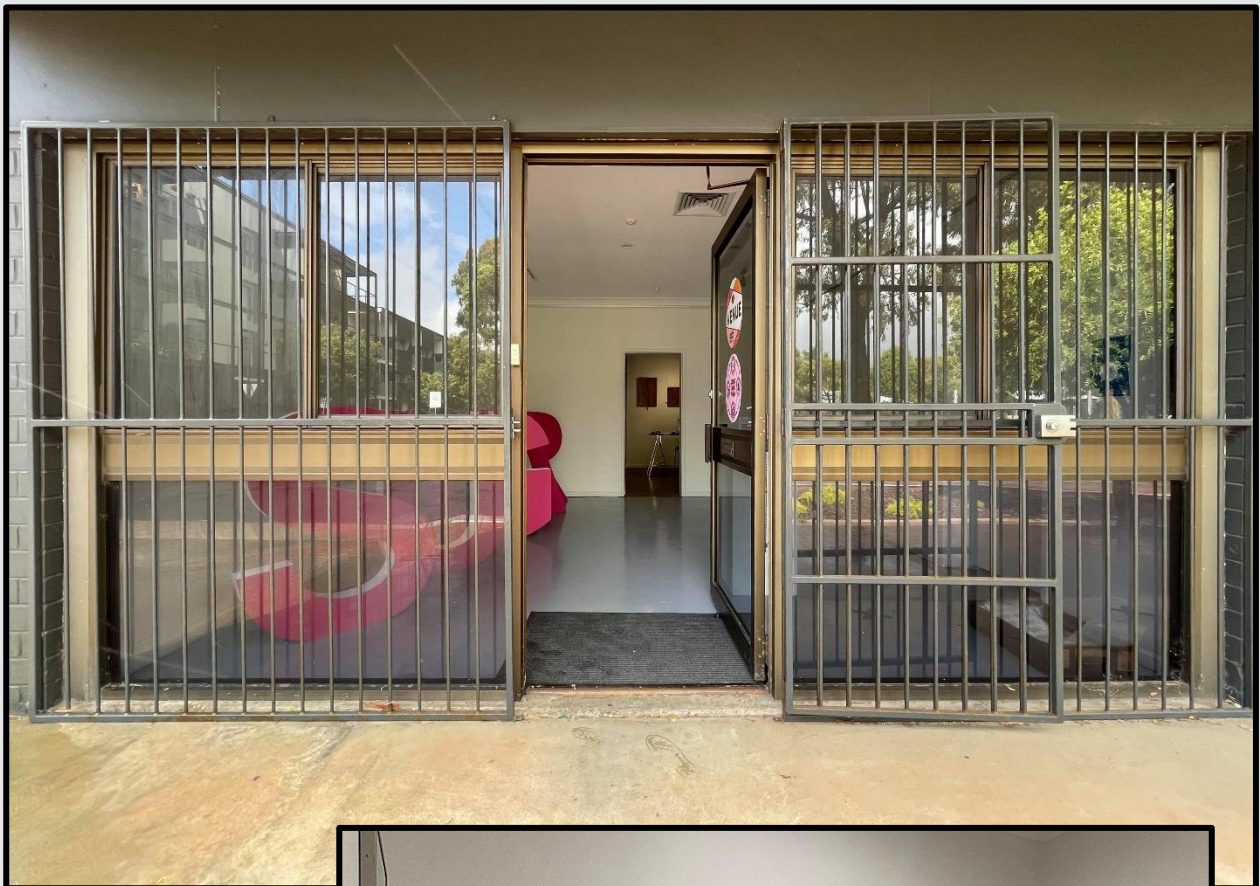


Plant4 is within walking distance (400m) and offers accessible facilities including cafes, eateries and outdoor play and rest spaces. Emu park can be found directly across from the gallery and is a great place for children to run around, play equipment can also be found close-by.

# FACILITIES

**Entrance/Exit:** The gallery can be accessed from the front entrance located at 68 Gibson Street.

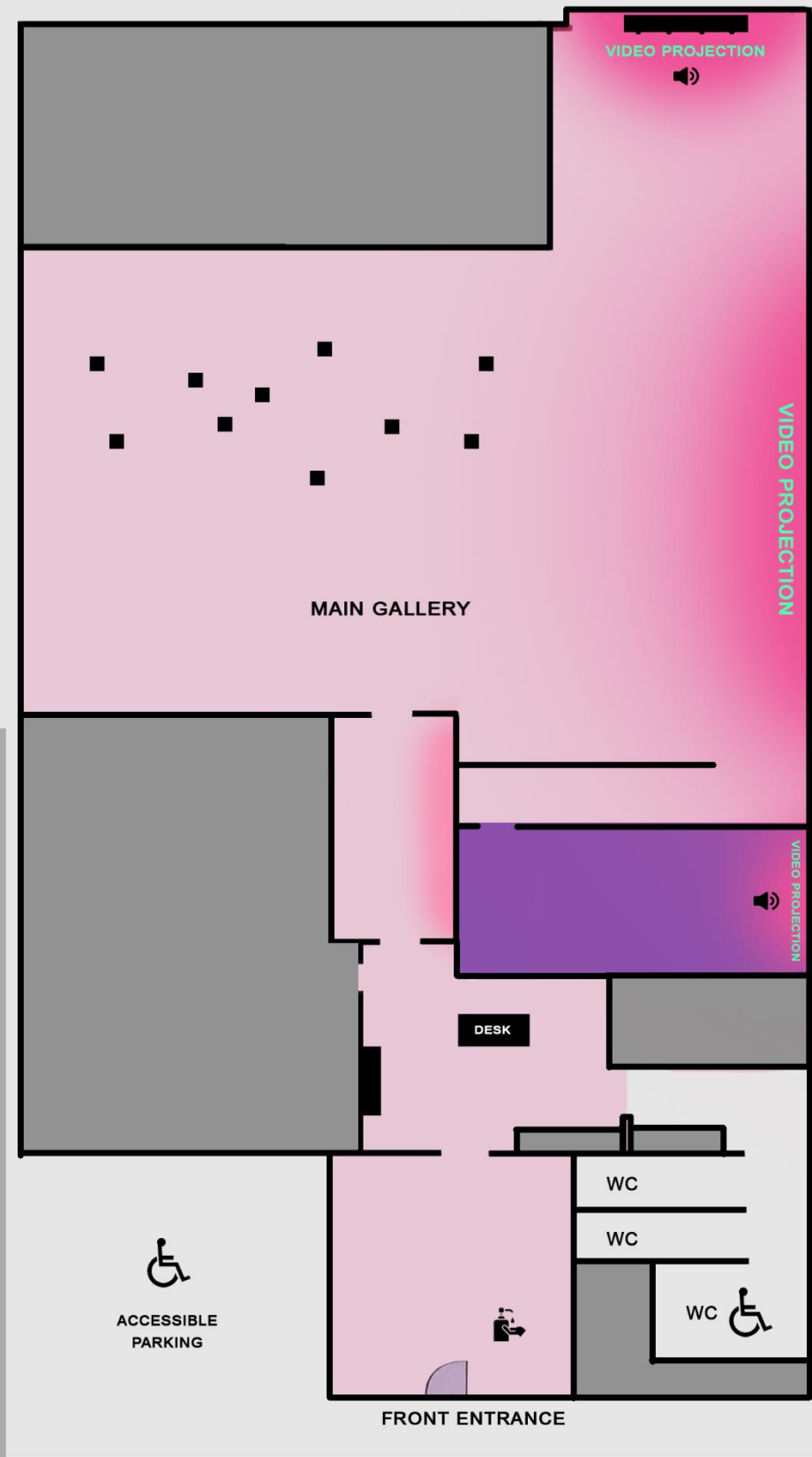
**Bathroom Facilities:** Praxis Artspace is equipped with two unisex bathrooms, and a separate unisex wheelchair accessible bathroom with sliding door, hand grabrails, and ambulant toilet.



# SENSORY MAP

**SENSORY KEY**

- LOW SENSORY - DIM LIGHTING, UN-MOVING FLOOR-BASED ARTWORK
- HIGH SENSORY - USE OF LIGHTS, PROJECTION, MOVING IMAGE
- VIDEO PROJECTIONS
- NO LIGHTING
- CLOSED AREAS
- AUDIO
- HAND SANITISING STATION
- ARTWORKS



68 - 72 GIBSON ST BOWDEN SA 5007