

Chris Boha

Upon the Threshold of Remembering

21.08.25 - 13.09.25



1. *Eugene's Ark: A butterfly Flaps its Wings*, 2025
Recycled timber, plywood, giclée prints, glass print, pocket watch
126 x 86 x 11 cm
\$4,200.00



2. *Mobile home*, 2025
Recycled timber, plywood, giclée prints, glass, found objects
132 x 80 x 11 cm
\$4,200.00



3. *Where once we walked*, 2025
Recycled timber, plywood, giclée prints, glass, gauge
93 x 93 x 11 cm
\$3,200.00



4. *Houseboat*, 2025
Handmade reclaimed timber frame, wood, giclée prints, glass print, copper, steel, found objects.
92 x 92 x 11 cm
\$3,800.00

Christopher Boha is a Canadian-born artist living and working in Adelaide, South Australia. Raised in a rural town of 600 people, his formative years were shaped by salvaging materials, building and making with his hands—experiences that continue to inform his practice to this day. Boha holds a Specialisation in Glass from the Alberta College of Art and Design and a PhD from the University of South Australia. With a background in glass, sculpture, fabrication and teaching, he has exhibited internationally across Australia, Canada, Italy, China and beyond. His work explores ideas of belonging, memory, belief and the stories we construct to locate ourselves in an unstable world.

Upon the Threshold of Remembering is a deeply layered exploration of cultural memory, ecological loss, and the shifting narratives we build to make sense of ourselves and our futures. In this body of work, Boha constructs hybrid 'altars'—assemblages of found objects, photography, printed glass and reclaimed materials—each acting as a reliquary for a changing world. The works evoke a sense of fragility and reverence, asking what we choose to hold sacred when the structures around us begin to erode.

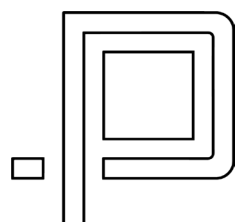
Drawing on his upbringing of salvaging and making, Boha brings both material and emotional archaeology into play. Hand-built frames from demolished homes and oxidized metals offer a tactile trace of time and entropy. His sculptures and wall-mounted pieces sit at a metaphysical threshold—between past and future, destruction and preservation, belief and doubt. Some works move or shift slightly, echoing the instability of the climate and the cultural narratives we cling to.

Through these works, Boha invites viewers to reflect on the remnants we carry—what we choose to preserve, mourn or mythologise. This is not just an act of memory, but a call to reimagine how we might live more consciously in the aftermath of change.



SALA

PRAXIS ARTSPACE
68-72 GIBSON ST, BOWDEN, SA, 5007
PRAXIS@PRAXISARTSPACE.COM
+61 8 7231 1974
PRAXISARTSPACE.COM



UPON THE THRESHOLD OF REMEMBERING

Chris Boha

PRAXIS ARTSPACE
21.08.25 - 13.09.25



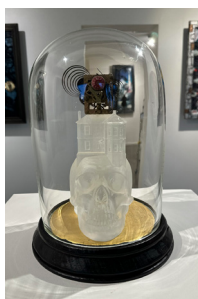
5. *Adrift, 2025*
Handmade reclaimed timber frame, wood, giclée prints, Silver leaf, glass print and found objects.
125 x 125 x 11 cm
\$6,700.00



10. *Adrift, skull balloon, 2025*
Handmade reclaimed timber frame, giclée prints, map
50 x 38 cm
\$650.00



14. *Architecture of The Aftermath, 2025*
Handmade reclaimed timber frame, giclée prints
50 x 38 cm
\$650.00



6. *Reliquary For A Glass House, 2025*
Blown glass, cast crystal, 24 carat Gold leaf, wood and clock mechanism.
25 x 35 cm
\$3,800.00



11. *Adrift, night sky, 2025*
Handmade reclaimed timber frame, giclée prints
50 x 38 cm
\$650.00



15. *Adrift, red balloon, 2025*
Handmade reclaimed timber frame, giclée prints, map
50 x 38 cm
\$650.00



7. *Catch of The Day, 2025*
Handmade reclaimed timber frame, giclée prints, re-print of 1920's news found under kitchen floor
50 x 38 cm
\$650.00



12. *The Cartographer's House, 2025*
Handmade reclaimed timber frame, giclée prints, map
50 x 38 cm
\$650.00



16. *Cliff House, Night Sky, 2025*
Handmade reclaimed timber frame, giclée prints
50 x 38 cm
\$650.00



8. *Last flight, 2025*
Recycled timber, plywood, giclée prints, glass, heat gauge
122 x 62 cm
\$3,800.00



13. *Adrift, Arora Skull Balloon, 2025*
Handmade reclaimed timber frame, giclée prints
50 x 38 cm
\$650.00



9. *The Astronauts Fable, 2025*
Handmade reclaimed timber frame, giclée prints
50 x 38 cm
\$650.00

CONTACT

PRAXIS ARTSPACE
68-72 GIBSON ST, BOWDEN, SA, 5007
PRAXIS@PRAXISARTSPACE.COM
+61 8 7231 1974
PRAXISARTSPACE.COM

